

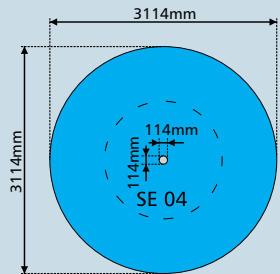
SE 04 - Jump Tower



improvement of jump ability

Jump up on the Jump Tower and see how high you can go. The scale shows your jumping height.

Alternatively you can stand in front of the Jump Tower and stretch one arm as high as possible.



Installation:

The device is delivered completely assembled and is screwed on top of the poured-in place foundation anchor (within the scope of supply). The Installation Guide can be found on www.saysu.de or upon request. Cover the ground anchor with filling material or with plastic covers (accessories).

For your draft we can supply 2D and 3D files.

Picture of the product may differ from original – subject to technical modification.



| | |
|------------------------------|--|
| length: | 114 mm |
| width: | 114 mm |
| height: | 3000 mm |
| floor space: | 0,01 m ² |
| floor space required: | 3114 x 3114 mm |
| volume: | 0,04 m ³ |
| weight: | 26 kg |
| plastic parts: | none |
| pipe measurements: | diameter: 114 mm wall thickness: 3 mm |
| metal parts: | stainless steel |

certificates: TÜV and GS certified according to PPP 55012:2010 (based on parts of DIN EN 1176, 1177, 957)

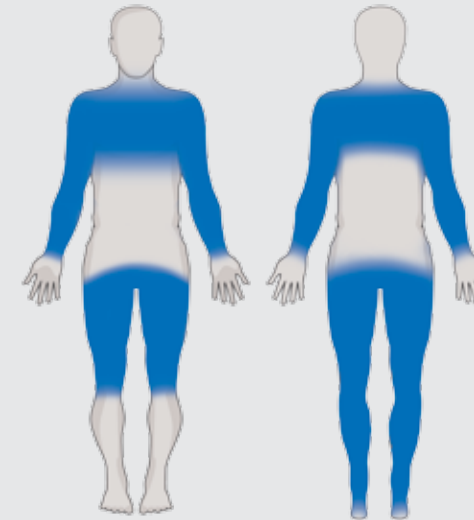
user age: children under 14 years only
under surveillance of parents

maximum user weight: 130 kg

safe distance: 1,50 m

drop height: < 0,6 m (possible underground see
DIN 79000:2012-05 Tab. 2 or
installation instructions)

safety system: none required



- strength
- endurance
- coordination
- mobility
- relaxation

improvement of jump ability

function: stretching and jumping

effect: improvement of jumping power, stretching

persons: 1