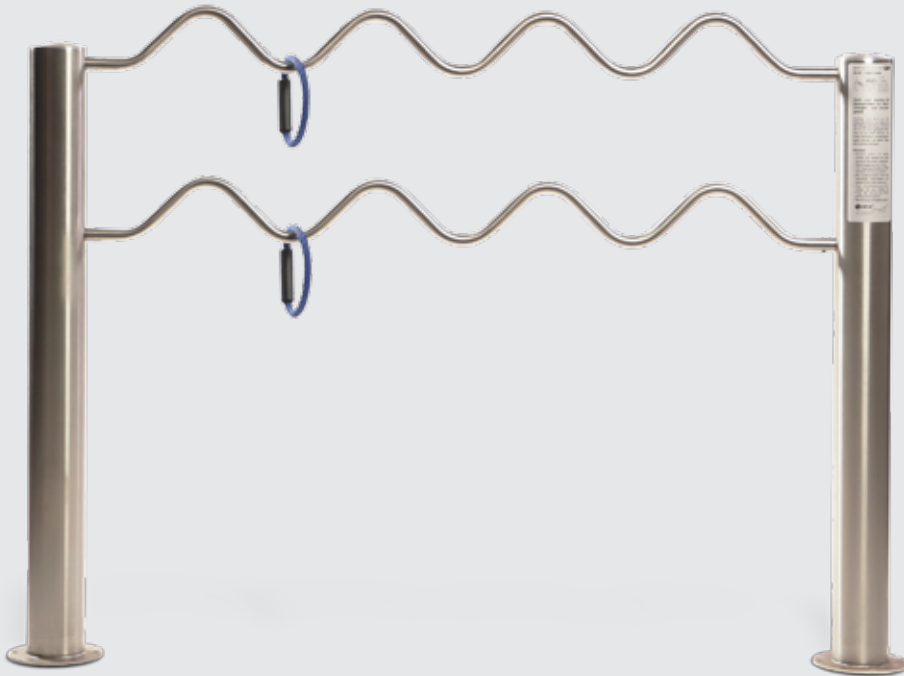


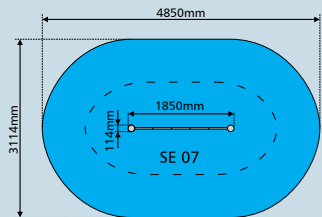
SE 07 -Track Tracer



improvement of **coordination** and **concentration**

Stand in front of the Track Tracer and hold on to the hanging ring. Lead it along the bent pipe without touching the metal.

To increase the level of difficulty, you can move both rings at the same time.



Installation:

The device is delivered completely assembled and is screwed on top of the poured-in place foundation anchor (within the scope of supply). The Installation Guide can be found on www.saysu.de or upon request. Cover the ground anchor with filling material or with plastic covers (accessories).

For your draft we can supply 2D and 3D files.

Picture of the product may differ from original – subject to technical modification.



length:	1850 mm
width:	114 mm
height:	1350 mm
floor space:	0,21 m ²
floor space required:	4850 x 3114 mm
volume:	0,28 m ³
weight:	27 kg
plastic parts:	Griffe! keine vorhanden
pipe measurements:	diameter: wall thickness:
	114 mm 3 mm
	27 mm 2,6 mm
metal parts:	stainless steel

certificates: TÜV and GS certified according to PPP 55012:2010 (based on parts of DIN EN 1176, 1177, 957)

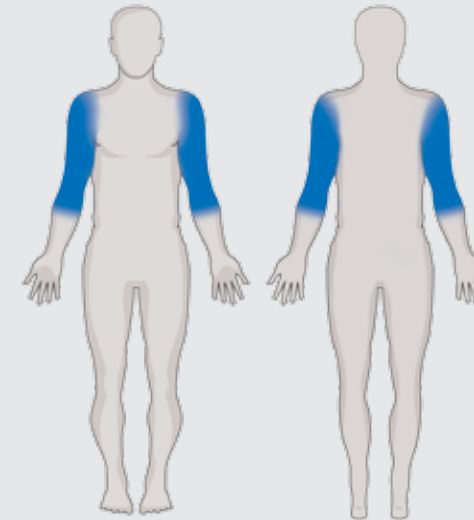
user age: children under 14 years only under surveillance of parents

maximum user weight: 130 kg

safe distance: 1,50 m

drop height: < 0,6 m (possible underground see DIN 79000:2012-05 Tab. 2 or installation instructions)

safety system: none required



- strength
- endurance
- coordination
- mobility
- relaxation

improvement of **coordination and concentration**

function: leading a ring along a bent pipe without touching the pipe

effect: improvement of coordination and concentration

persons: 2 at the same time